
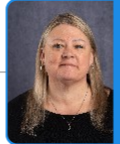




Organizational Chart


As of 07/01/2026


 Tara Roussett
Chief Executive Officer


 Sheri Windsor
Executive Assistant

 Jaci Gonzales
Chief Impact Officer


 Rachel Richter
Chief Operations Officer


 Anna Ford
Chief of Staff and
General Counsel

 Tanya Gonzalez
Executive Strategic
Advisor


 Tiffany Brown
Chief Financial Officer

Jennifer Sanchez
Business Consultant
Contracted Staff


 Adrian Quintanilla
Sr. VP of Operations

 Lauren Shepherd
Sr. VP of Strategic
Initiatives


Kirk Coverstone
Psychological
Consultant
Contracted Staff

 Amber Cottrell
Sr. VP of Human
Resources

 April Molina
VP of Communications and
Marketing

 Lucinda Valdez
Sr. VP of Legal
Services

 Julia Galvan
Director of Consumer
Affairs


 Carlye Dupart
Sr. VP of Administrative
Services


 Cynthia Lopez
Sr. VP of Development

 Tim Lanning
VP of IT

 Sam Dowell
VP of Finance

 Matt Trevino
Director of Facilities
& Fleet Operations

 Ashley Leal
VP of Family
Enrichment Services

 Kane Jagers
VP of Community
Enrichment

 Esmeralda Silva
VP of Training and Staff
Development

Human Resources

Marketing & Social Media

Legal Services

Consumer Affairs

 Yvette Moran
Sr. VP of Quality
Assurance & Contracts

Development

IT Department

Accounting

Fleet & Maintenance

Belong

CPA

Touchstone

Clinical Services

Program Development

Data

Training

Quality Assurance & Contracts

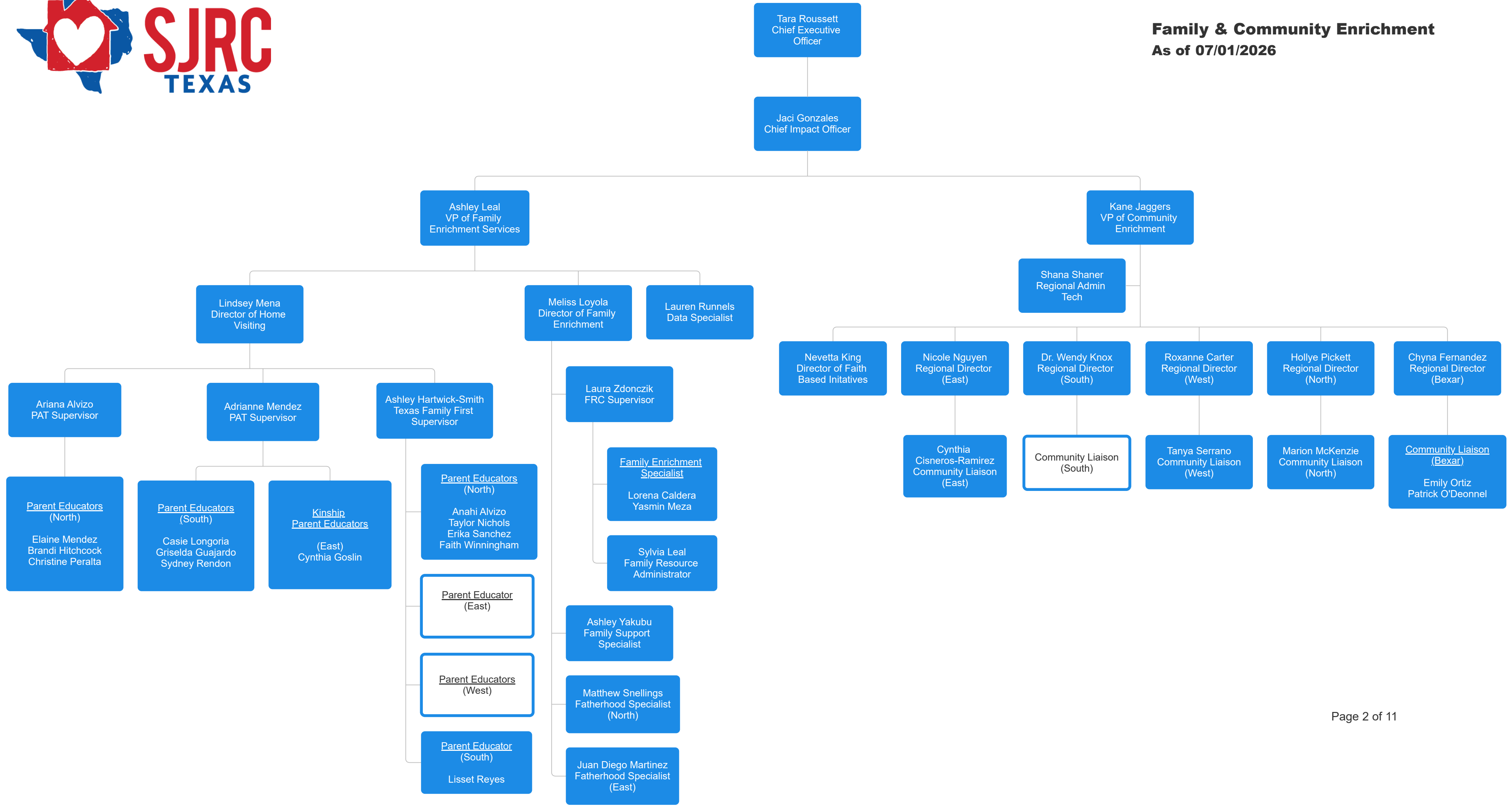
Regional Directors

Faith Based Initiatives

Family Enrichment Services

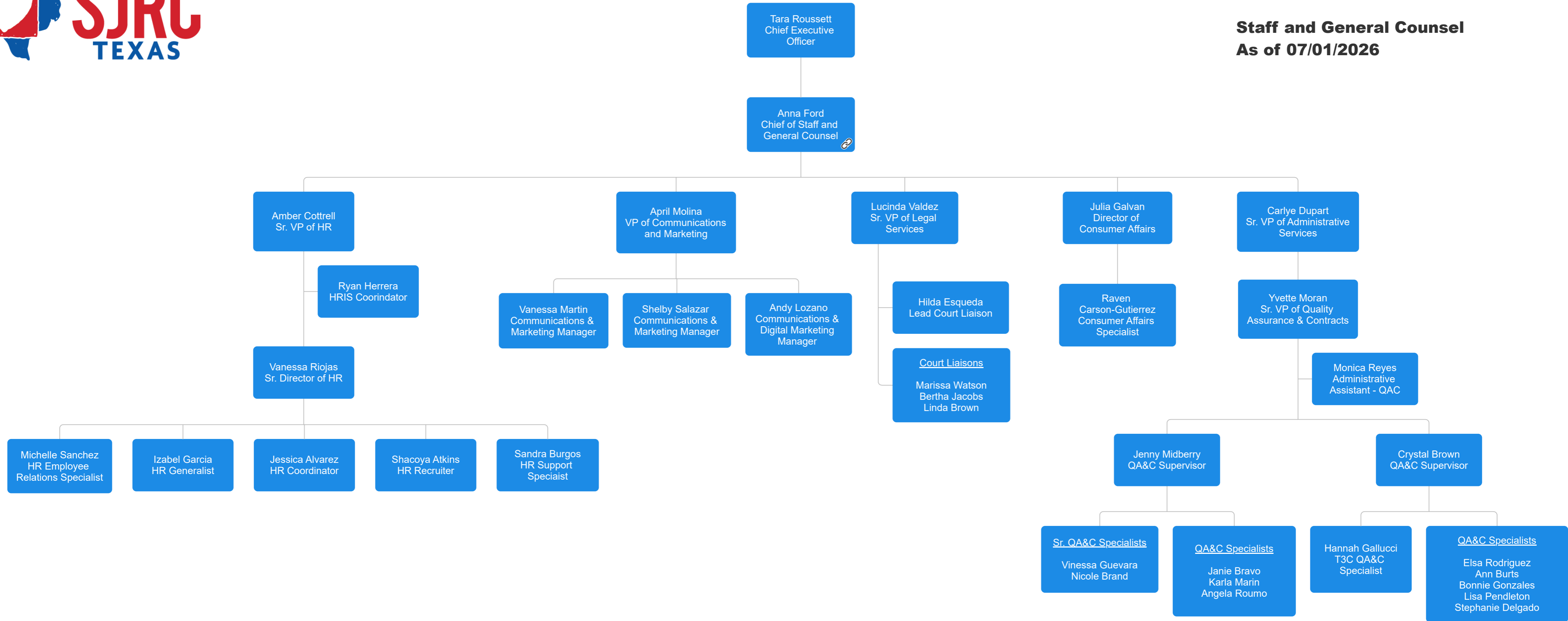


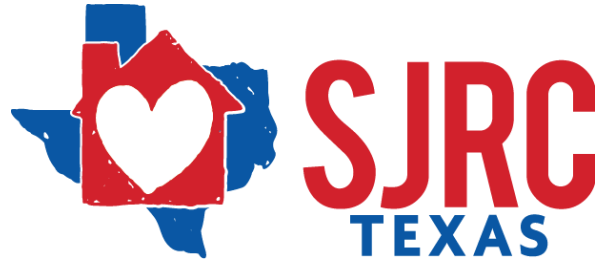
Family & Community Enrichment
As of 07/01/2026



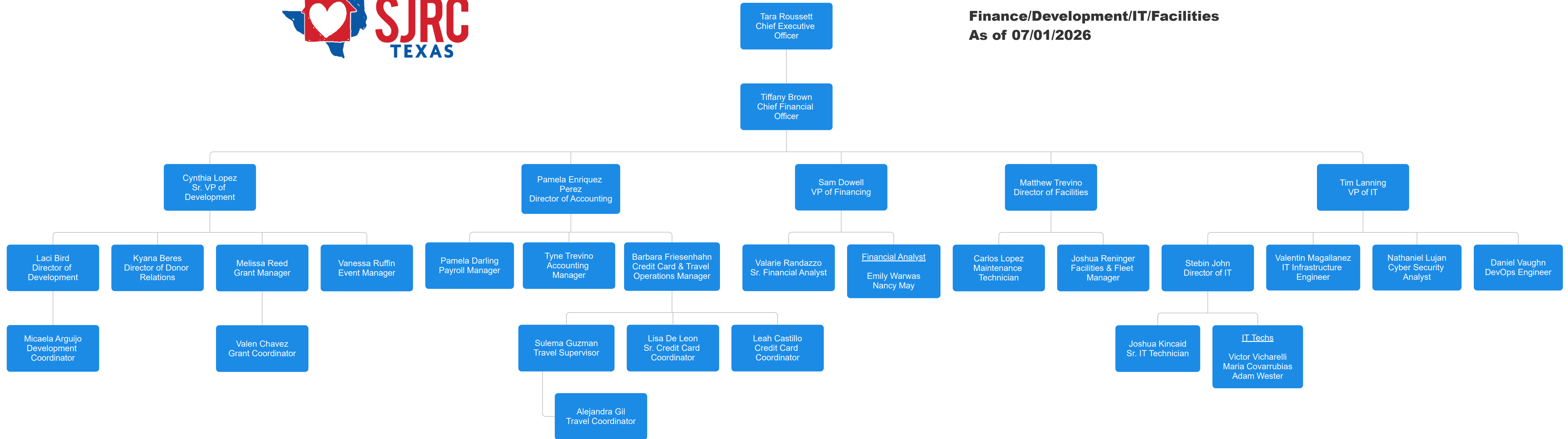


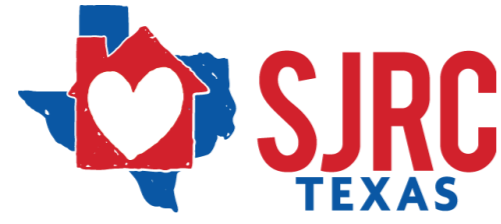
**Staff and General Counsel
As of 07/01/2026**



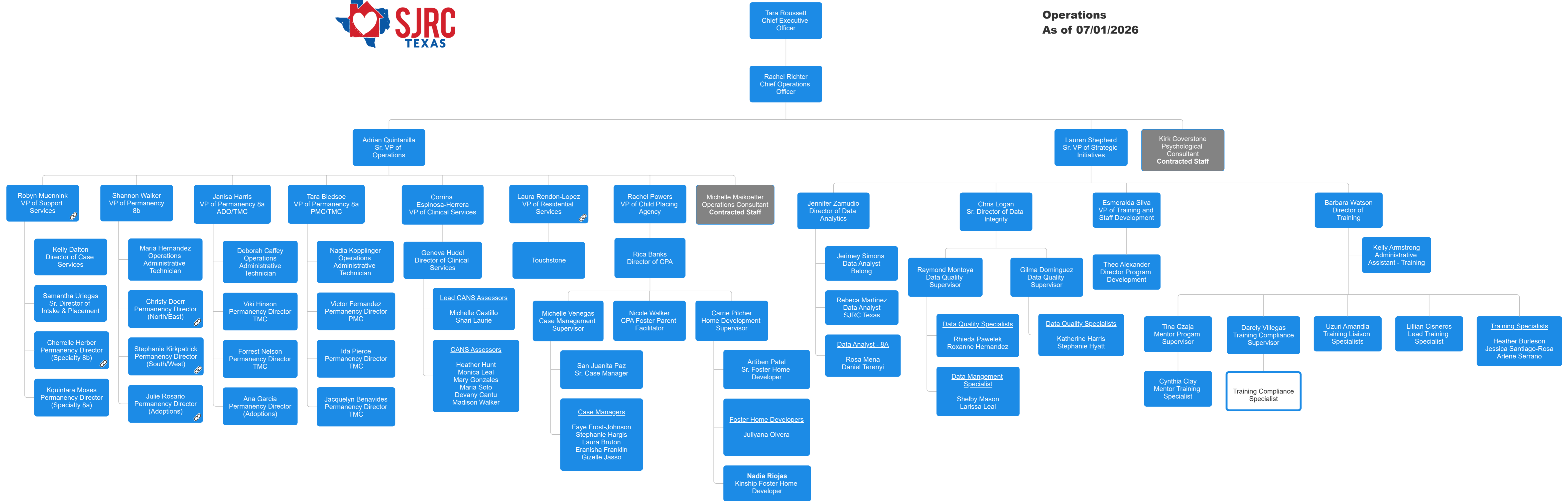


Finance/Development/IT/Facilities
As of 07/01/2026



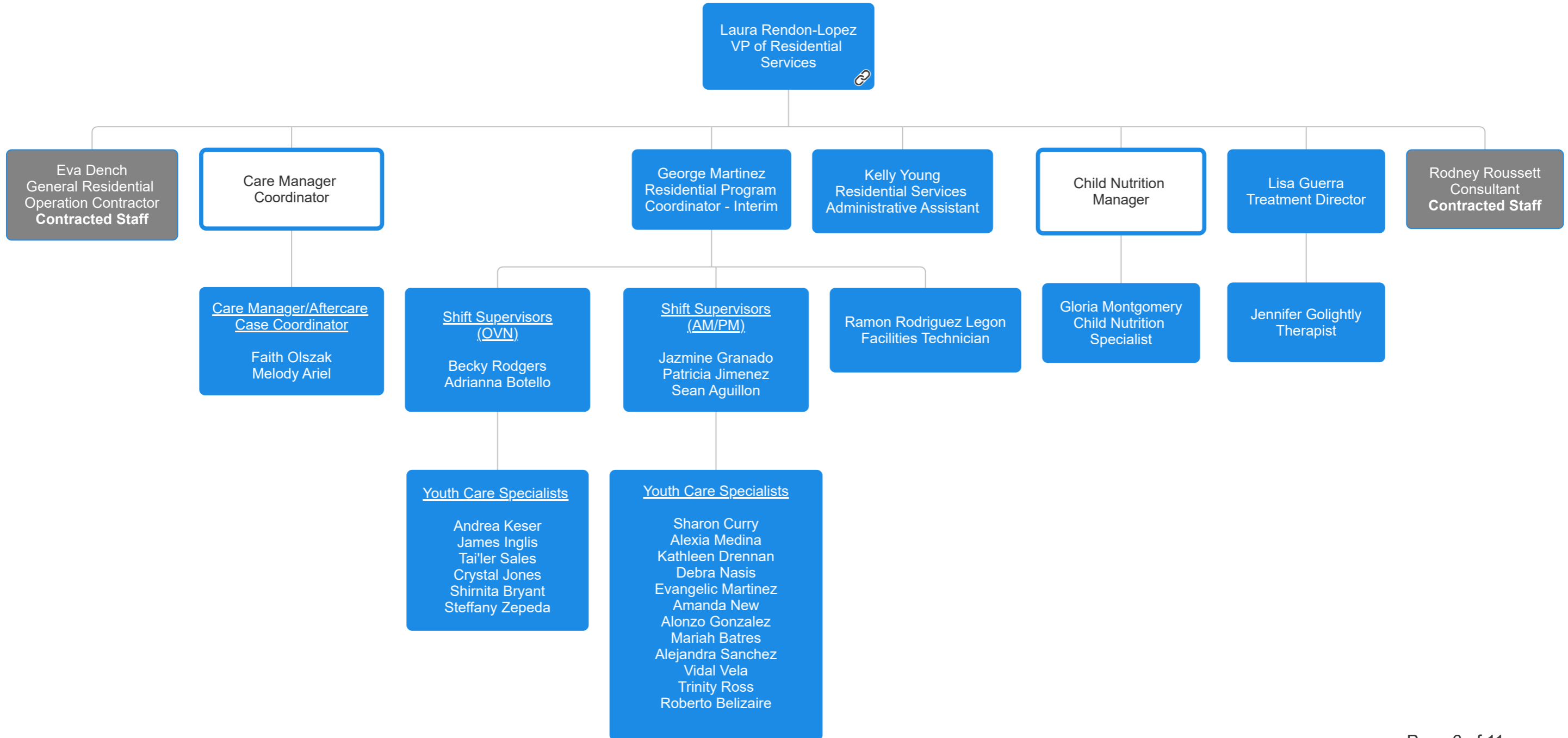


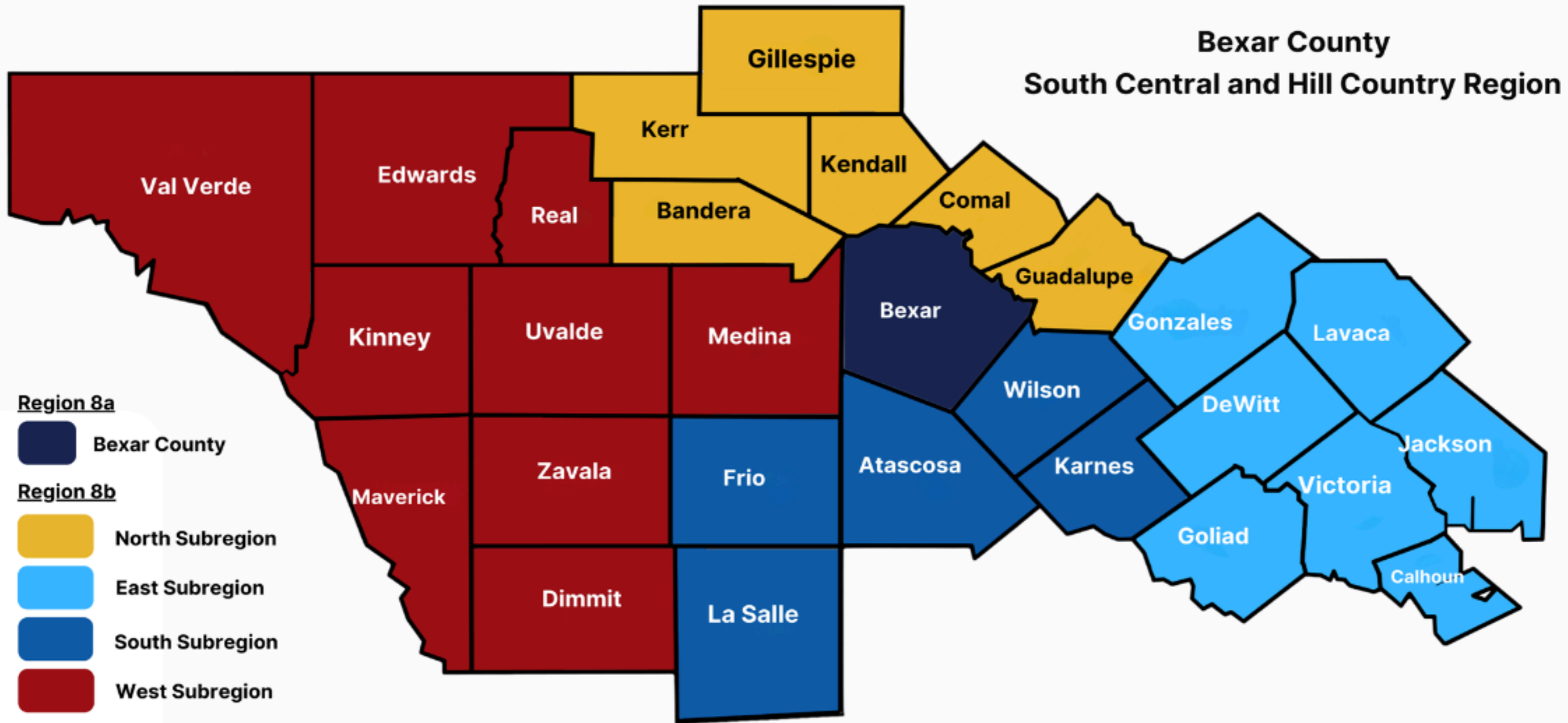
**Operations
As of 07/01/2026**

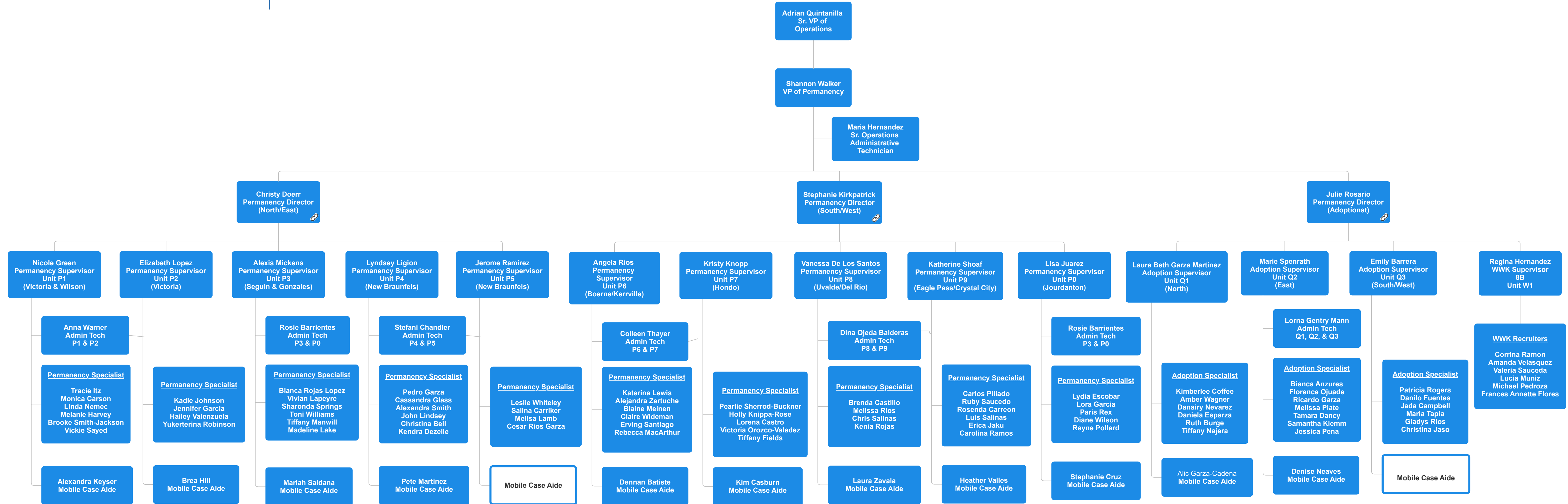




Operations - Touchstone
As of 07/01/2026

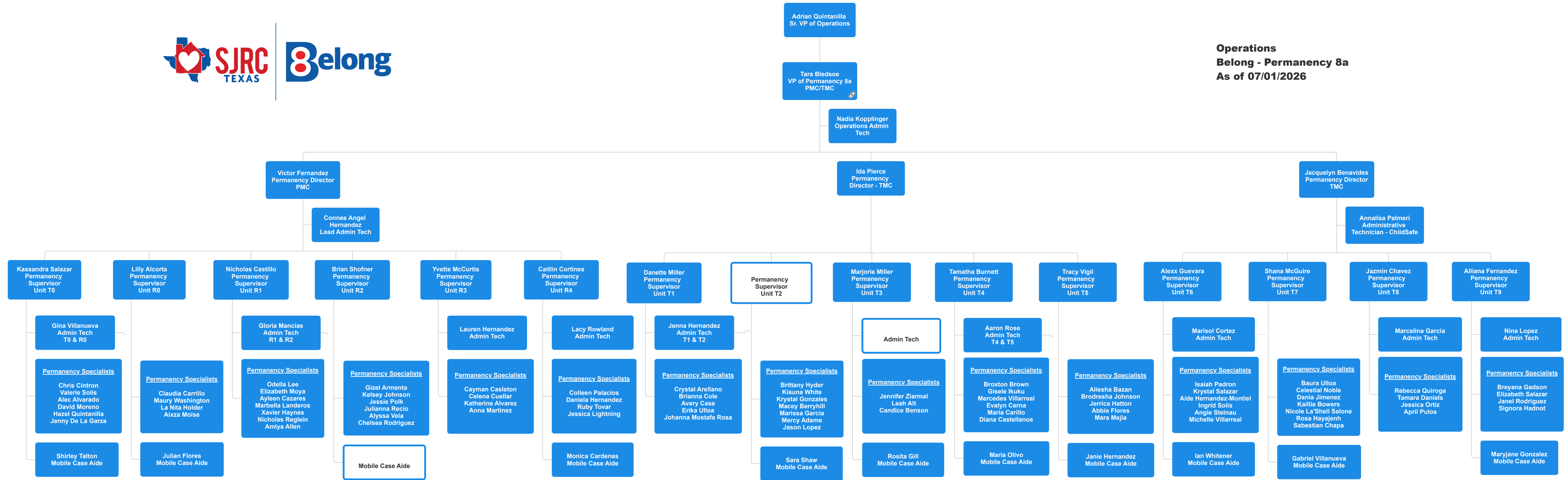








Operations
Belong - Permanency 8a
As of 07/01/2026





Operations
Belong - Permanency/Adoptions 8a
As of 07/01/2026

